



SIGNATURE QUICK START GUIDE

PLEASE READ THIS GUIDE FOR A QUICK AND EASY START OR SCAN THIS QR CODE TO FIND THE VIDEOS!



1. ACCESSORIES

For additional info, refer to Section 1.3 of the User Manual



USER MANUAL



SOFT BRUSH



DUST CLOTH



CALIBRATION CARD



POWER CABLE



PRINTER PAPER ROLL

2. BACK OF UNIT

For additional info, refer to Section 1.5 of the User Manual



- Top Cover
- Power Socket
- Power Switch
- Back Drawer
- USB Port
- RS-232 Port
- SD Card Port

3. DISPLAY

For additional info, refer to Section 1.7 of the User Manual

Selected Mode: USD MIX ADD BATCH:100

Selected Currency: USD

Add Function (activated)

Preset Quantity: 100

Number of Bills: 0

Total Value: 0

Detection ON

Automatic/Manual Start: (A)

Time: 16:42

Date: 04-30-2021

Number of Rejects: R: 0

Recent Bill Serial Number: SN: 04-30-2021 16:42

4. MODES & FUNCTIONS

For additional info, refer to Section 3 of the User Manual

- MIX** Count all mixed denominations of selected currency
- SORT** Single denomination counting with the first counted one as reference
- COUNT** Count only the number of bills
- ADD** Keep track of the total number and value of the multiple stacks of counted bills
- BATCH** Allow to select a batch quantity for a specific counting process
- DSORT** See Section 3.3 of the Kolibri Signature User Manual for more info.
- FACE** See Section 3.5 of the Kolibri Signature User Manual for more info.
- ORIENT** See Section 3.6 of the Kolibri Signature User Manual for more info.
- VBATCH** See Section 3.7 of the Kolibri Signature User Manual for more info.
- AUTO-CURRENCY** See Section 4.5 of the Kolibri Signature User Manual for more info.
- MULTI-CURRECNCY** See Section 4.6 of the Kolibri Signature User Manual for more info.



SIGNATURE QUICK START GUIDE

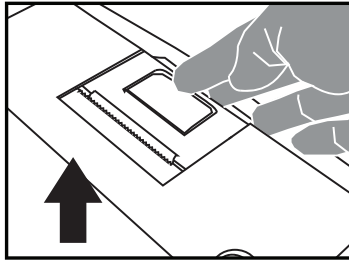
PLEASE READ THIS GUIDE FOR A QUICK AND EASY START OR SCAN THIS QR CODE TO FIND THE VIDEOS!



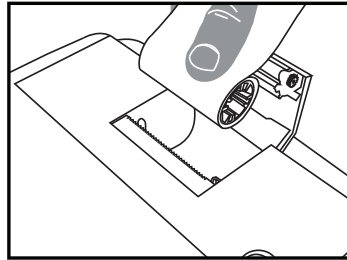
The Kolibri Signature has a built-in printer on top of the machine and the unit comes preloaded with a roll of printer paper.

5. BUILT-IN PRINTER

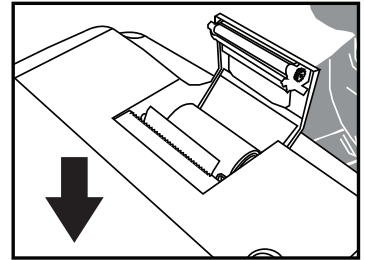
For additional info, refer to Section 5.3 of the User Manual



1. Lift up the lid to open.



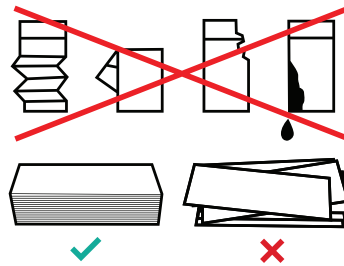
2. Insert paper roll inside.



3. Close lid and leave 1/4" of the paper sticking out.

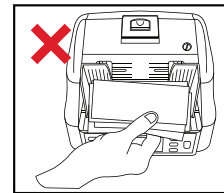
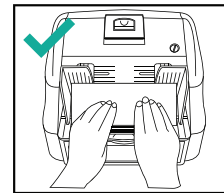
6. BILL LOADING

For additional info, refer to Section 2.2 of the User Manual

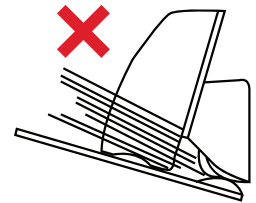
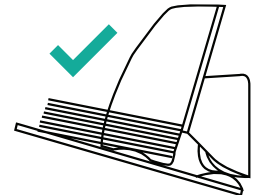


1. Make A Stack

Correct or remove bills that are severely wrinkled, damaged or folded. Square the bill stack.



2. Load The Stack



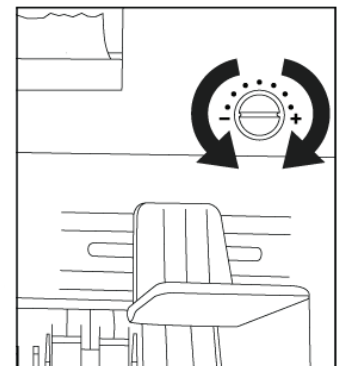
3. Feed The Bills

7. MAINTENANCE

For additional info, refer to Section 6.1 of the User Manual



To get access to the sensors for cleaning or removing jammed notes, please open the back door as shown above



If you have jams, please turn the knob to adjust the feed gap